

IRMACS Portal Website

General Information

To remotely access IRMACS web facilities including e-mail and the Plone intranet, you can log into the following website:

HTTPS://portal.irmacs.sfu.ca

This site serves as a web VPN interface and works with most web browsers. In order to access these facilities, you will also need an IRMACS username and password.

Getting Started

Use any web-browser to navigate to *https://portal.irmacs.sfu.ca* where you will see the login screen illustrated in Figure 1. Please note that this site uses **secure http**, so you must use **https** at the beginning of your web address. You will need to log in with your IRMACS username and password. Once you have entered this information, click **Login**.

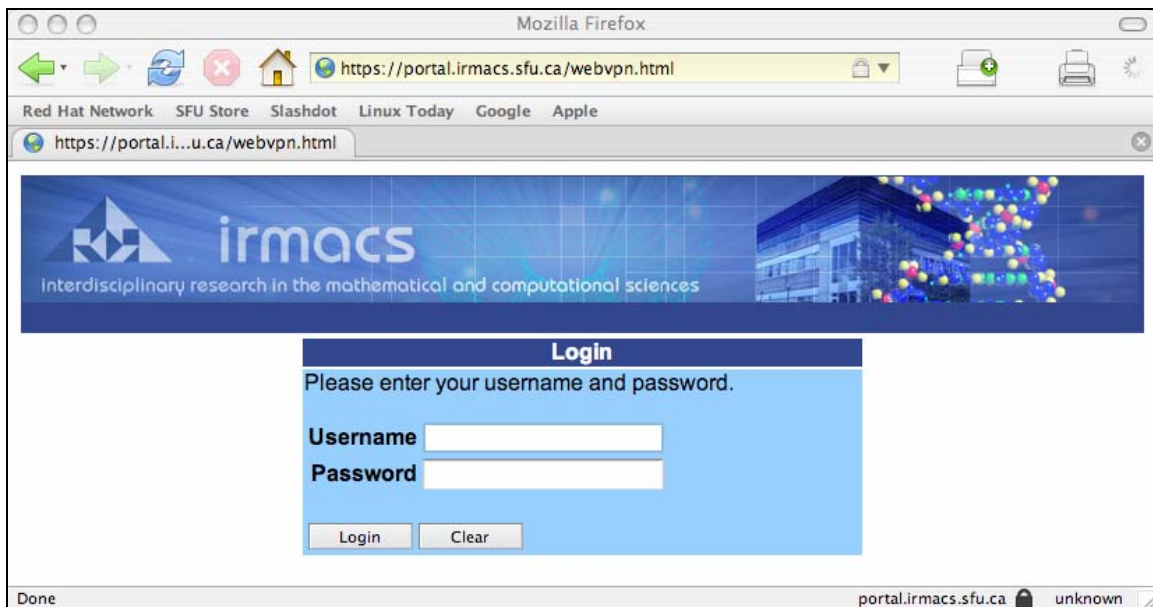


Figure 1: IRMACS Portal Website



irmacs

interdisciplinary research in the mathematical and computational sciences

Because this site is encrypted, you will need to accept the certificate sent by the web-server. If you are using your own machine you may accept the certificate permanently. The message that appears will look similar to Figure 2.



Figure 2: Accepting Certificate

Once you have logged in, you are directed to the selection screen. There are two preconfigured options, **IRMACS Webmail** and **IRMACS Plone Site**. You may enter any other website in the URL entry area. The portal website will then act as a proxy to make it seem as if you are accessing these features from the Internal network. This is required for using the Webmail service or Room bookings (Plone) service. The service selection screen is shown in Figure 3.

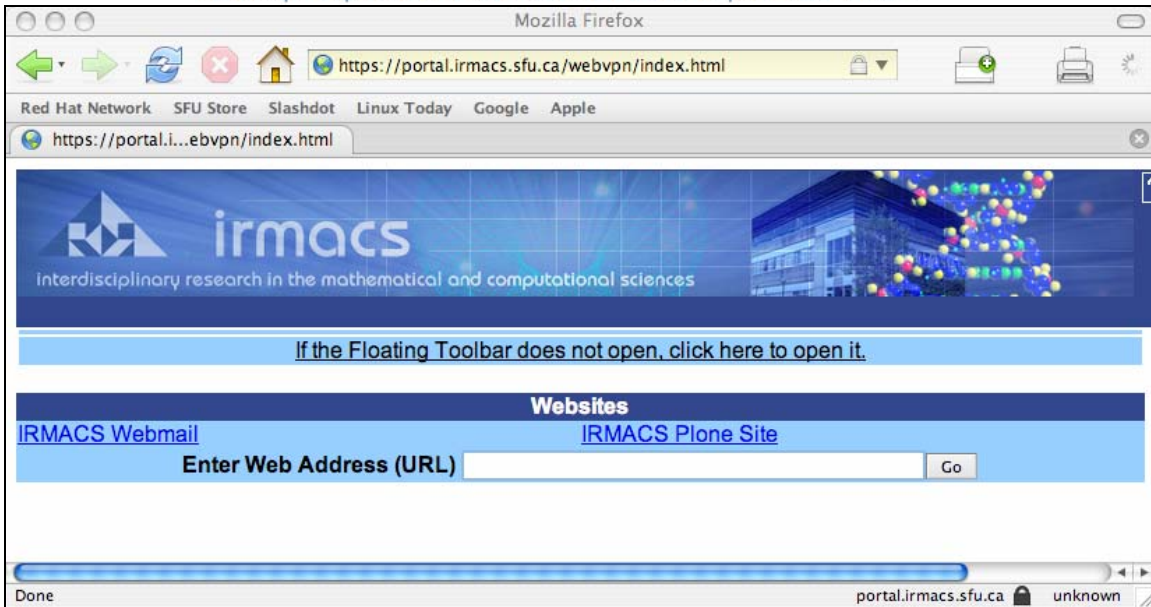


Figure 3: Service Selection

Navigating Portal Site

Figure 4 shows a toolbar that is displayed on the upper right hand corner of the Portal website. This toolbar allows the user to choose, help, URL dialog box, return to home page, and exit.



Figure 4: Portal Toolbar

Many web-browsers now block un-requested popup windows. If you're simply logging on to the system to use the Webmail feature, or the Plone site, you may not want to use the toolbar for additional navigation. However, if you wish to open other website you wish, using the IRMACS Portal site, you may request a floating URL Dialog box.

As shown in Figure 5, this Dialog box you can open the plone site, IRMACS Webmail, or any web address that you enter in the web field.

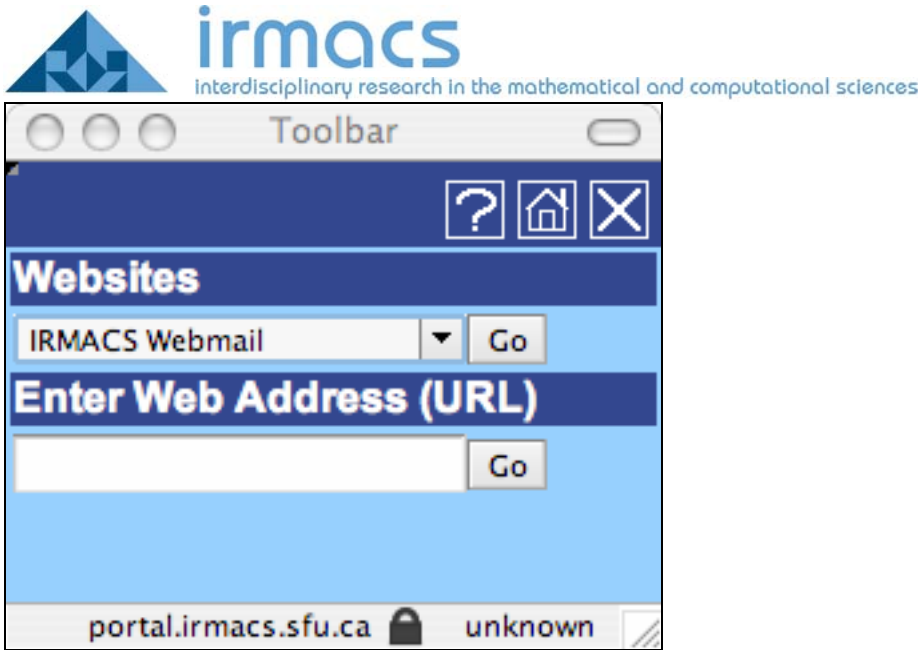


Figure 5: Portal URL Dialog Box

Once you have logged in to the IRMACS web portal you may check your IRMACS e-mail, as illustrated in Figure 6. In order to access your Webmail, you will once again need to input your IRMACS username and password, and then click on **Login**.



Figure 6: Webmail Login



irmacs

interdisciplinary research in the mathematical and computational sciences

You will then be directed to the Webmail screen. This Webmail acts the same way as your regular mail client. A view of the Webmail screen is shown in Figure 7.

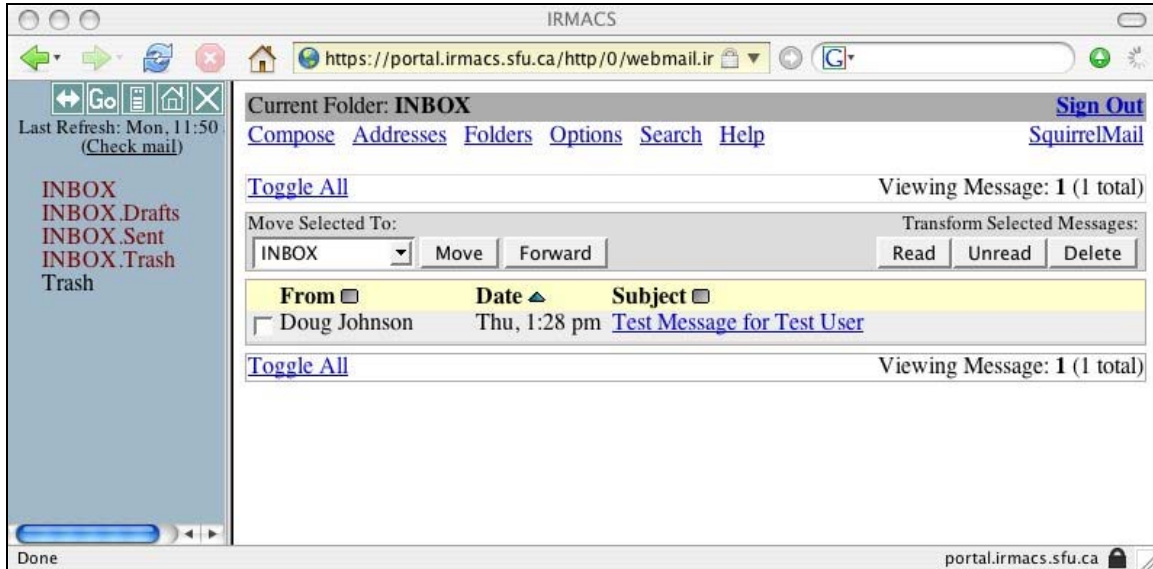


Figure 7: Webmail