

## IRMACS Remote File Access

This document demonstrates how to access your files when you are not on one of the IRMACS workstations. The connection information is summarized below followed by an example using Fugu in OS X and then another example using WinSCP in Windows XP.

### Connection Information

You can use SSH (SFTP/SCP) to access your IRMACS files. To do so you need a program that works with SFTP (Fugu and WinSCP are the examples used below), your regular IRMACS login information, and the server name:

**cobalt.irmacs.sfu.ca**

### Fugu

Fugu is a free program that runs on OS X. You can download it from the web:

<http://rsug.itd.umich.edu/software/fugu/>

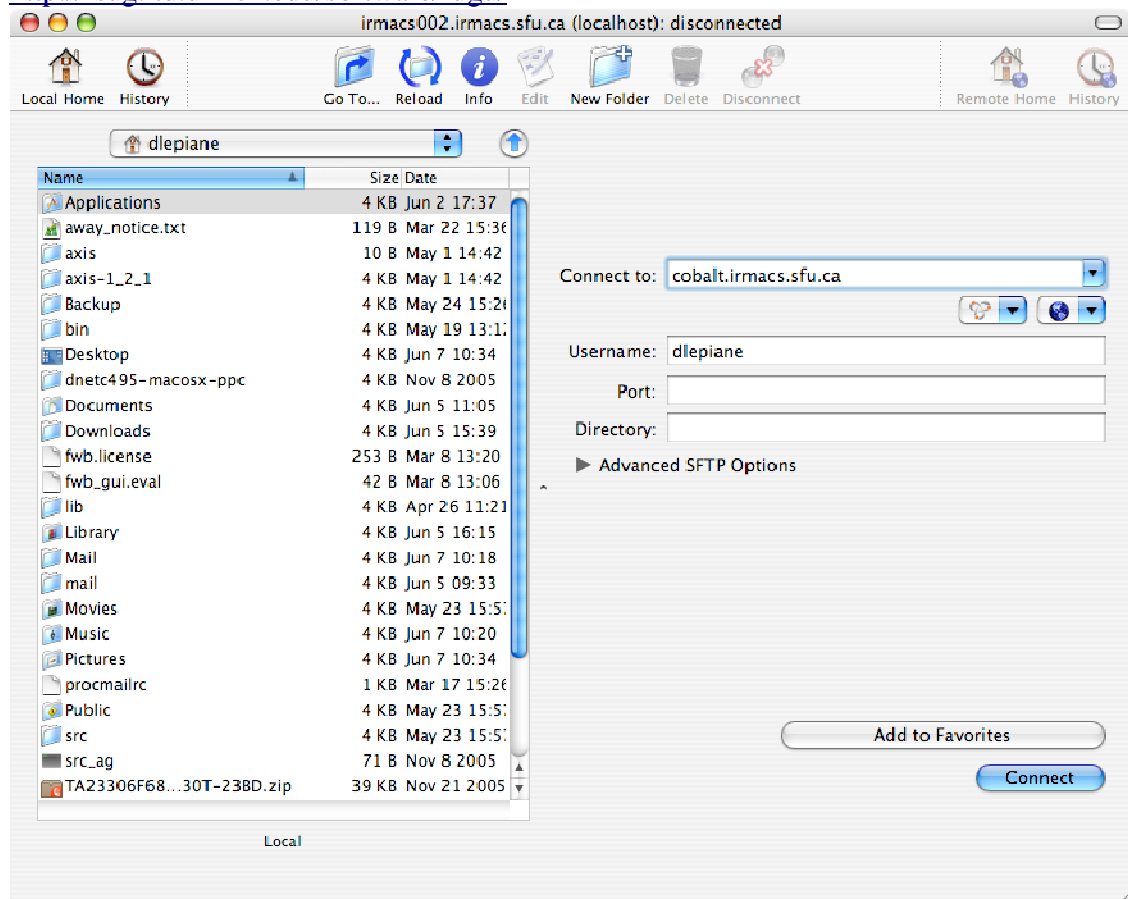
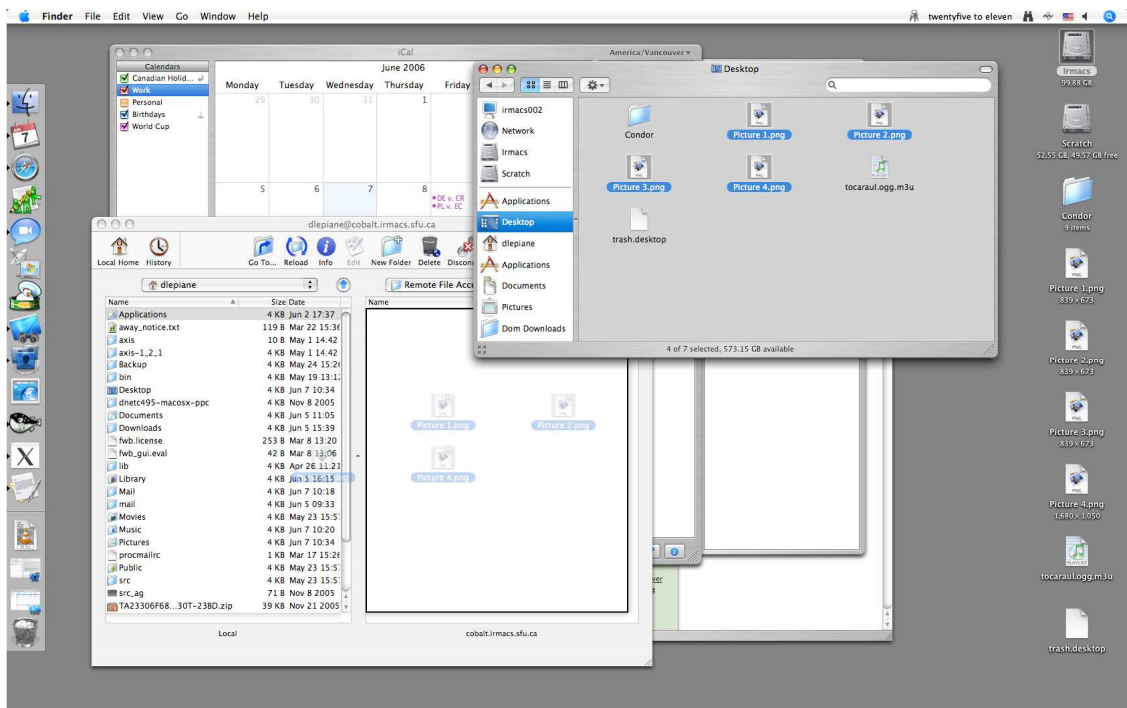


Illustration 1: Opening a connection in Fugu to cobalt.irmacs.sfu.ca

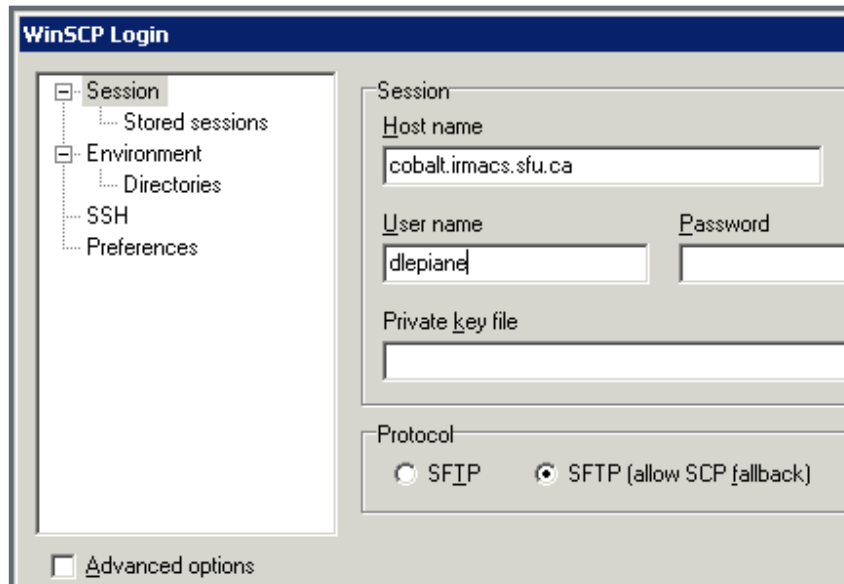
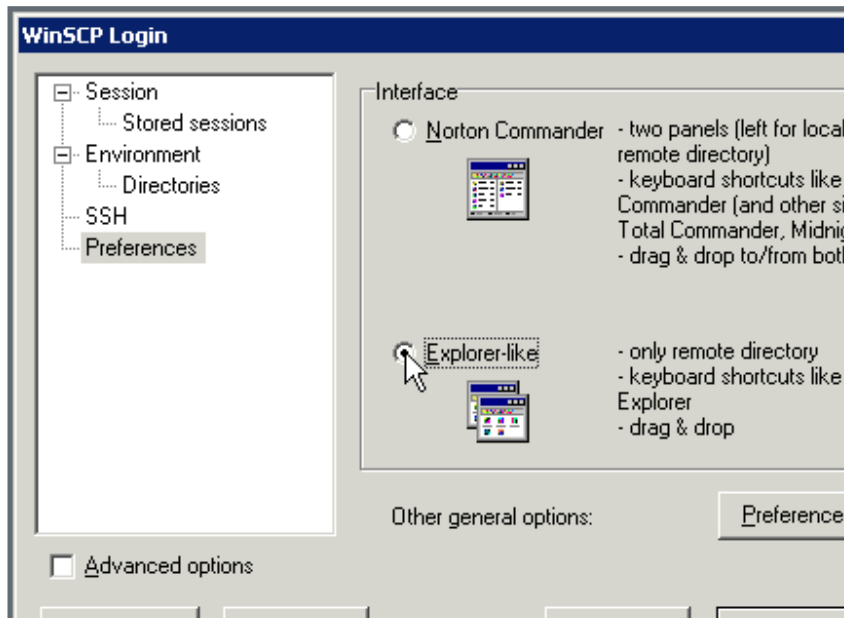


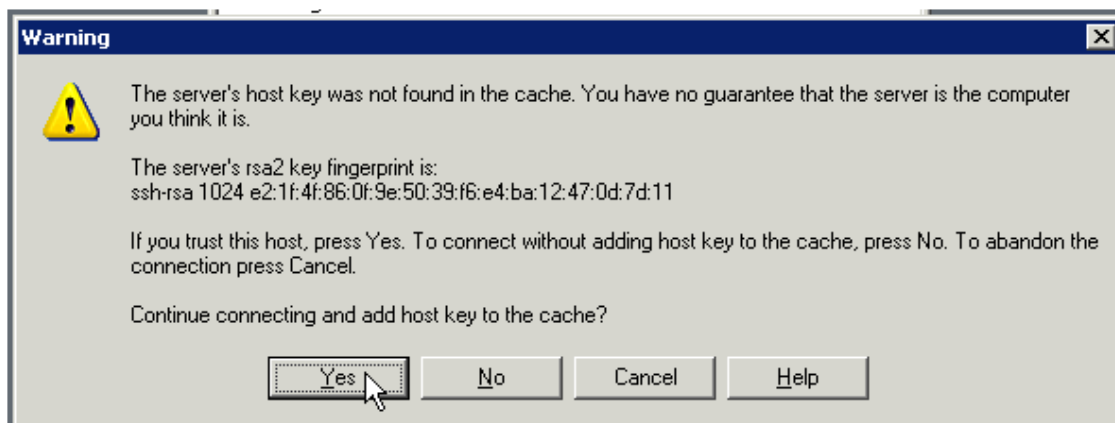
*Illustration 2: Just drag and drop files to or from the Fugu window.*

## WinSCP

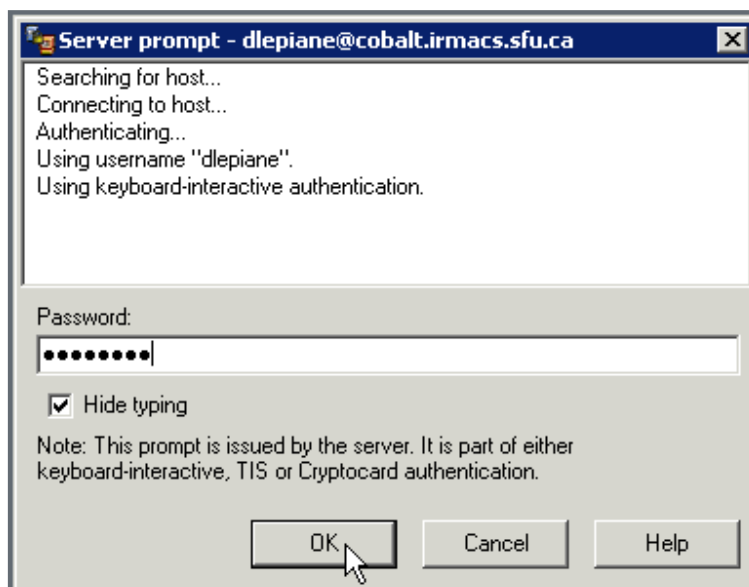
WinSCP is a free program for Windows that you can download from:

<http://winscp.net>

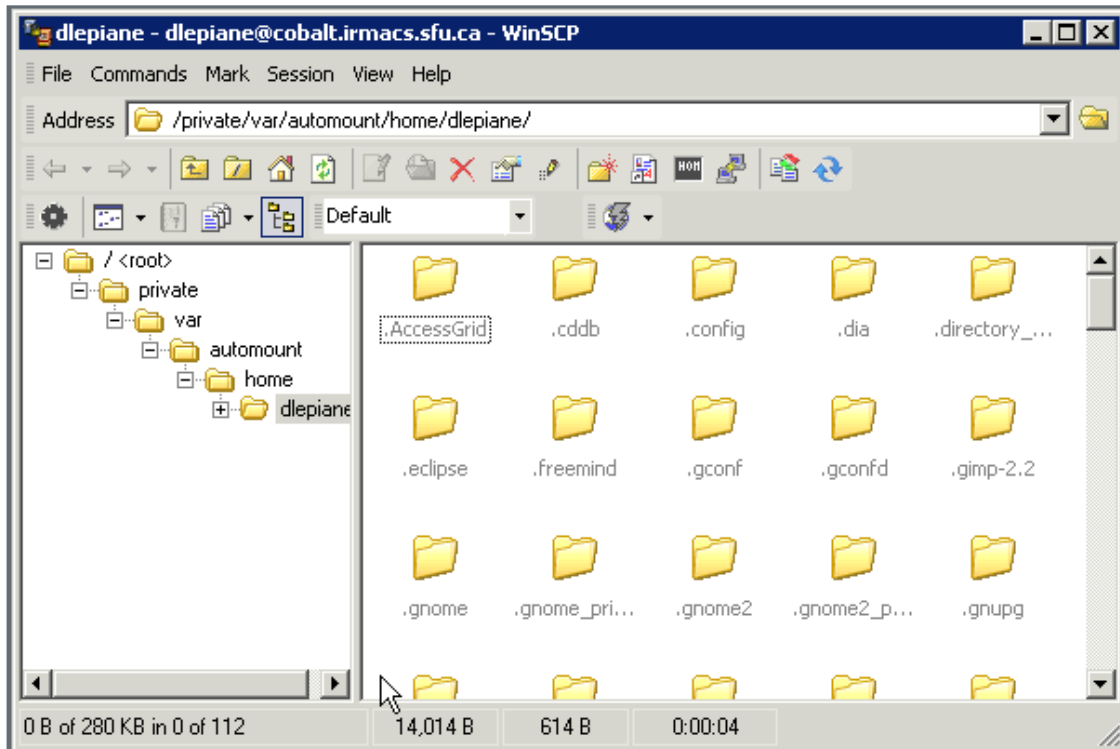




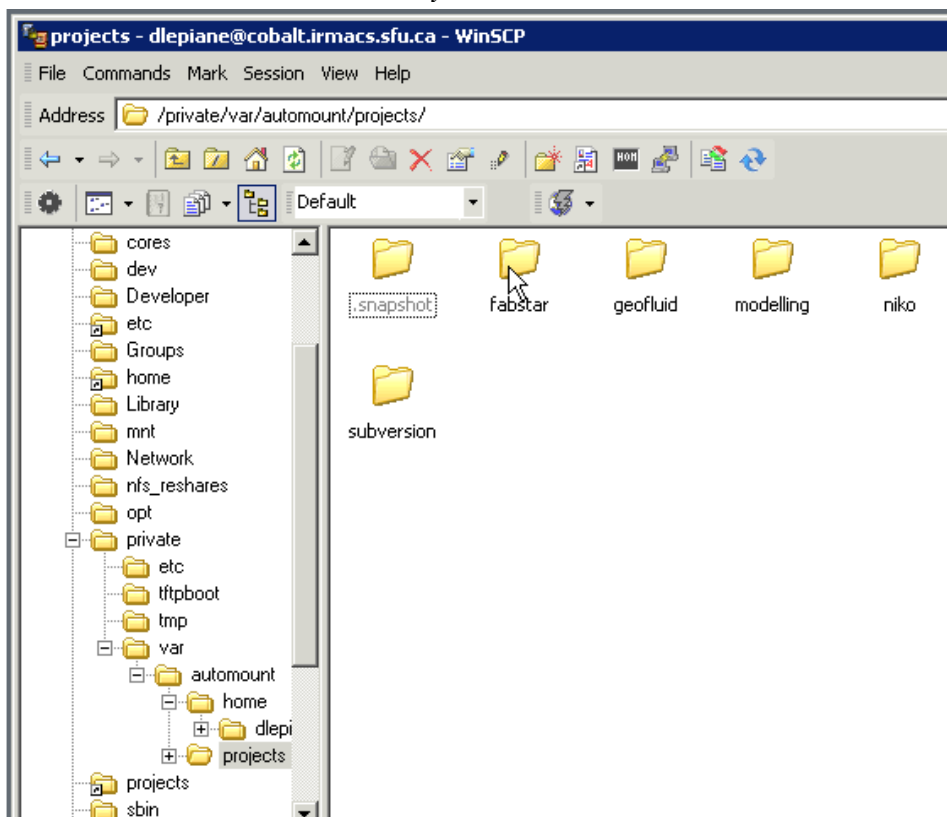
*Illustration 5: You will get this connection warning the first time you connect.*

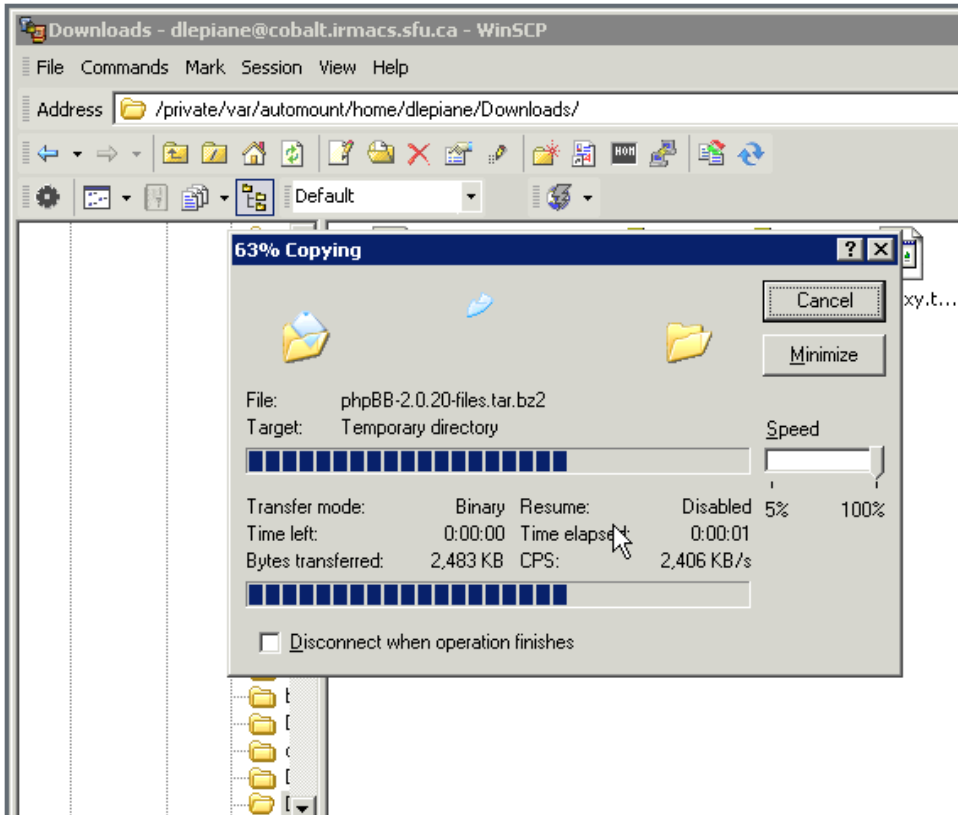
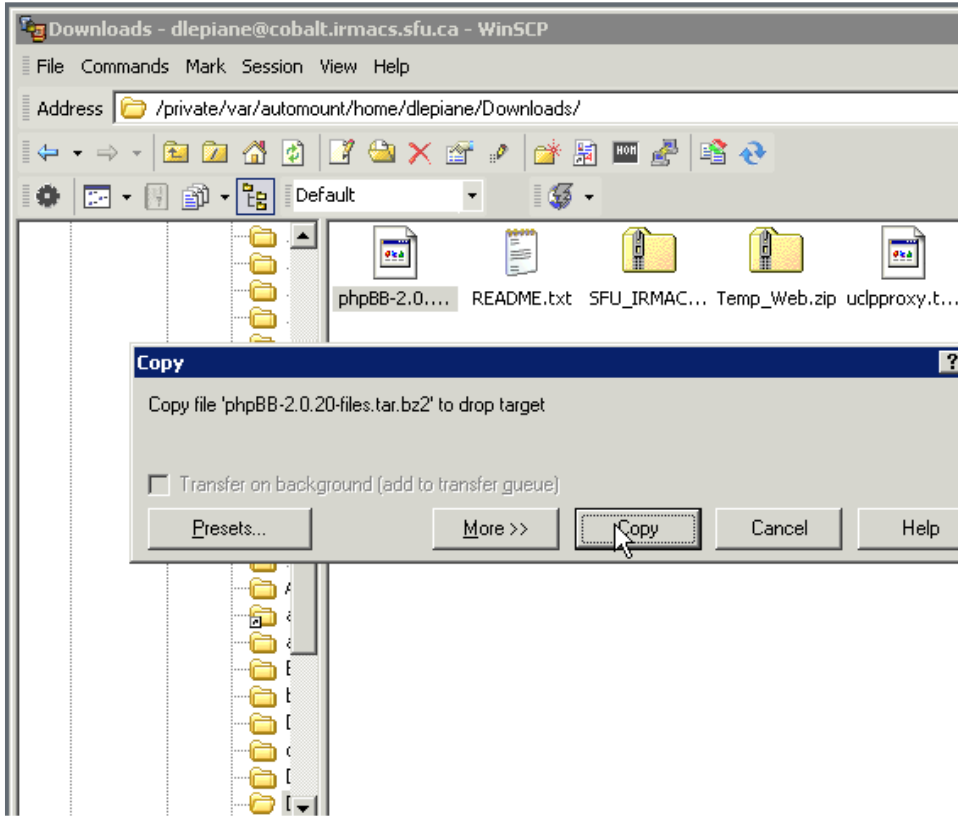


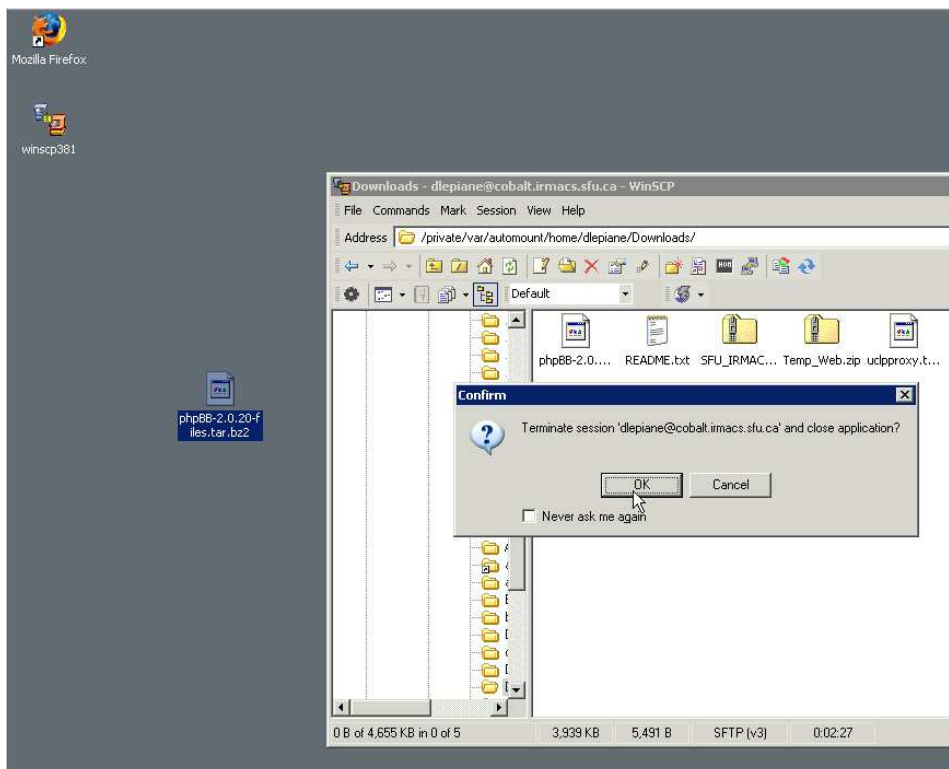
*Illustration 6: Give your IRMACS password at the login prompt.*



*Illustration 7: Your home directory.*







*Note: You will see there are a lot of files and folders in your home directory that have names starting with a "." like ".ssh" and they appear in grey. These are program and system configuration files so it is essential that you do not move, modify, or delete any of these files unless you know what you are doing.*